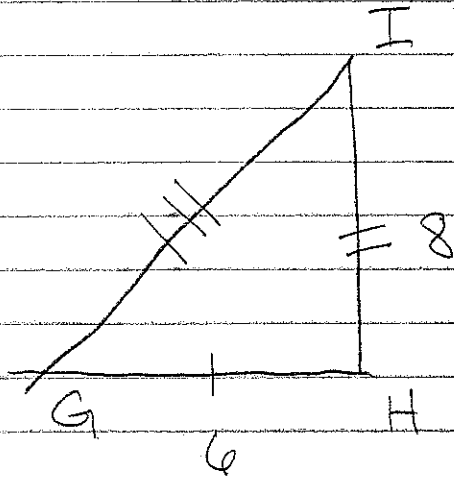
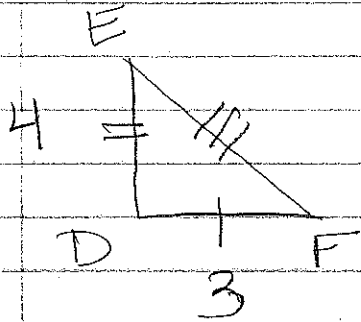


7.3

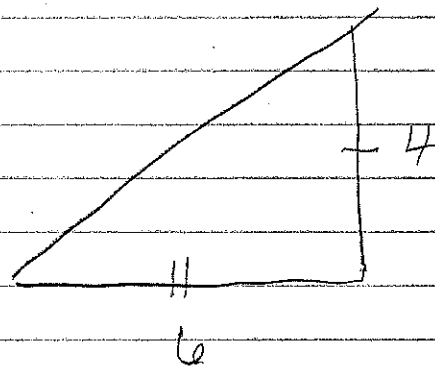
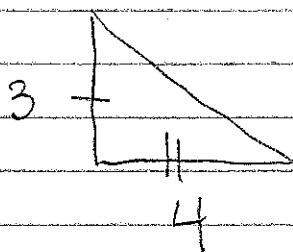
Similarity by transformations



$$\frac{\text{small left}}{\text{small right}} = \frac{\text{long left}}{\text{long right}}$$

Yes
Similar

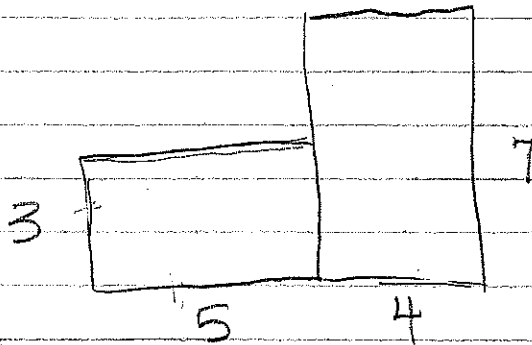
$$\frac{3}{6} = \frac{4}{8} \quad 4 \cdot 6 = 24 \quad 8 \cdot 3 = 24$$



$$\frac{3}{4} \neq \frac{4}{6} \quad 6 \cdot 3 = 18 \quad 4 \cdot 4 = 16$$

Not Similar

example



$$\frac{3}{4} = \frac{5}{7}$$

$$7 \cdot 3 = 21$$

$$5 \cdot 4 = 20$$

Not
Similar

1st enlarge by 2
2nd enlarge by 1.5
original 2 x 3

(1st) $\frac{2}{2}$ by $\frac{3}{2}$

(2nd) $\frac{4}{1.5}$ by $\frac{6}{1.5}$

6×9